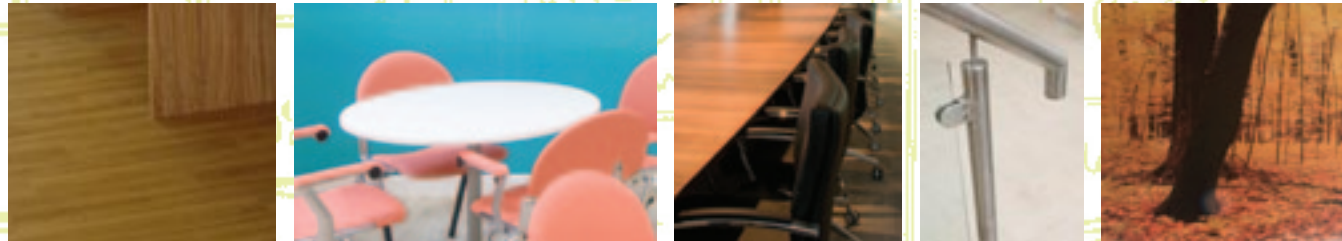


# blue fig interiors ltd

office interior design and fit out



# who we are



blue fig is a vibrant interior design company specialising in the design and fit out of offices. If you're considering a refurbishment or relocation we offer a very personal service, working closely with you to create a space that meets the needs of your business and the people who work there.

“ Peter and his team always paid great attention to detail, and showed tremendous commitment to getting the job successfully completed: they were always responsive and nothing was ever too much trouble. ”

Jeremy Trevethick  
Project Director  
St Regis



# who we are

**//** Everything was done as promised, on time and within the budget set. The workforce was polite and responsible, and everything was left clean and tidy. **//**

A Memmott  
**Managing Director**  
**Fairweathers Chartered Surveyors**



**We pride ourselves on the professional and attentive service we offer our clients. Many of these have come to us through recommendations and for us there's no greater compliment. We believe that the best way to promote our business is by delighting clients every time.**



# what we do

Blue Fig's ability to cover all aspects of the project, from design and planning, down to the procurement of office furniture and carpeting, was very beneficial

Tara Moore  
Versatus



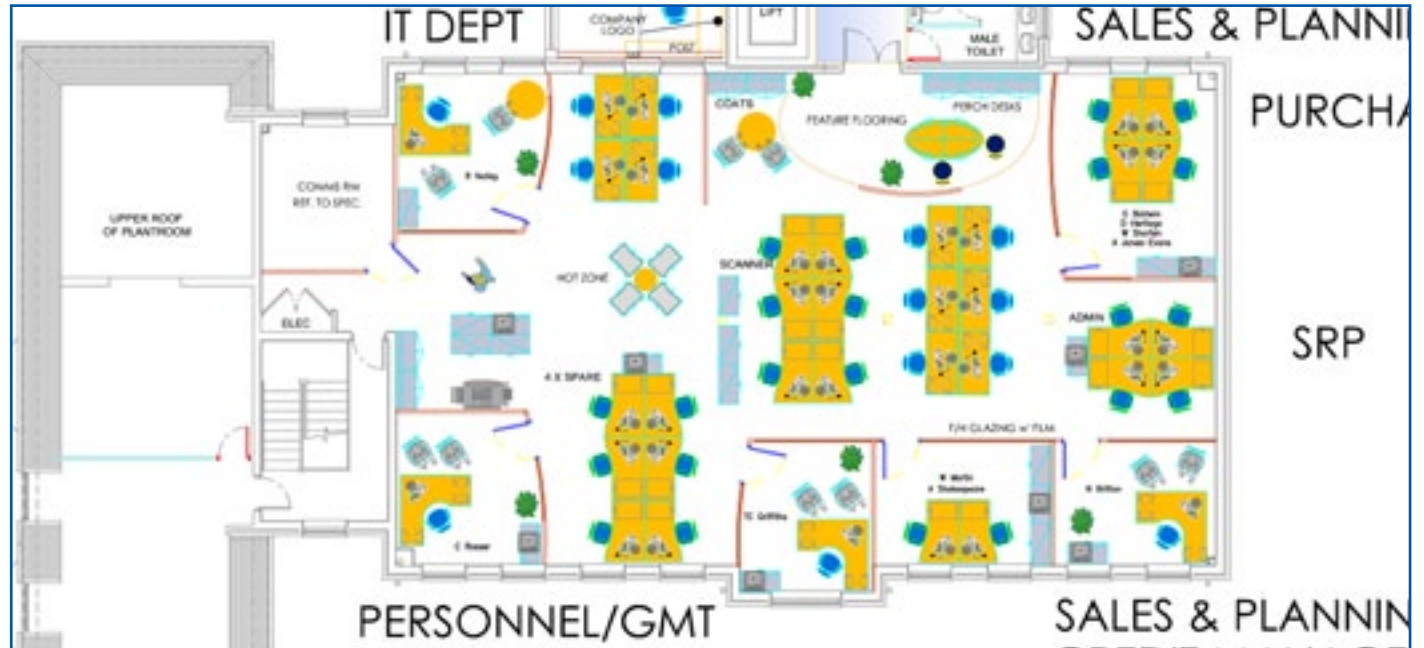
Our relationship with our clients is at the heart of what we do. You won't encounter any pushiness or hard sell, just a friendly, professional service. We simply believe that the best results only come from a collaborative process. The more we talk to you, the better we can tailor our designs to suit your needs.



# what we do

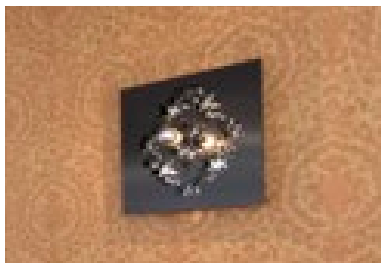
**//** The final icing on the cake was that the project came in on time and to budget; both of which were critical requirements. **//**

Marie Percival BA FRICS  
Rushmoor Borough Council



If you are at the stage where you are looking at several office locations, we can help you with the selection process by carrying out space feasibility studies; the same services can also be applied to remodel your existing office environment to improve efficiency.

Our aim is to make you feel at ease throughout the whole project, ironing out any problems that may arise and working towards an end result that you're delighted with.



# how we do it

**//** I would like to say a huge thank you again for the care and quality of workmanship delivered in the creation of our new bureau. All of my staff comment on the “professional environment” and what a pleasure it is to work here....Thank you for your insight, hard work and commitment to making this a great place to work in. (The seahorse is an added bonus of course!) **//**

Karyle Davidge-Stringer  
Citizens Advice Bureau

Once your business location has been decided, we will visit you for an initial design brief meeting. This is to establish how your business currently operates and what areas we could help improve. We'll then discuss how the space needs to be organised taking account of departmental adjacencies and how you operate as a business. If you require individual offices, meeting rooms, Comms Rooms, Tea points or a reception area, we'll work out the best way to utilise the space available.



# how we do it

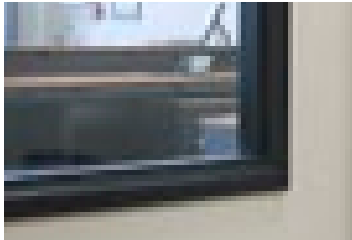
“ if you're not happy with any aspect of the design it's easily changed”



After establishing how the space will be used, we'll be ready to progress to the plan drawing stage. From initial sketches we'll develop CAD format general layout plans; if required we can also produce fully rendered 3D visualisations so you'll get a true feel for how your new office space will look. Every detail will be covered, from floor surfaces to lighting, air conditioning and security, electrical, IT, partitions, joinery, If you're not happy with any aspect of the design it's easily changed. In addition we can assist you with office furnishings utilising our extensive network of desking, seating and storage manufacturers and suppliers. In addition we can assist you with office furnishings utilising our extensive network of desking, seating and storage manufacturers and suppliers.



# how we do it



Before construction begins, we will consult a range of tried and tested subcontractors to get you the very best price for having the work done. We will also be having discussions with our Building Control Approved inspector and CDM Co-ordinator to ensure all building and Health and safety regulations are being adhered to on our part and on yours.

// The personal engagement and commitment of the team was second to none //

Stephen Rust,  
The Search Works





# who we've done it for



**The Search Works International Ltd**  
London W1

**New Headquarters office**  
interior design, fit out  
and furniture.

**Size: 4,500 sq ft**

**Program: completed**

**Value: £220,000**



# who we've done it for



## Enterprise Rent-a-Car Hanworth, Middlesex

New branch office  
design and fit out

Size: 1,200 sq ft

Program: 6 weeks

Value: £150,000



# who we've done it for



example of directors previous work

## Dynamis plc London EC1

New headquarters office design,  
fit out and furniture

Size: 4,652 sq ft  
Program: 12 weeks  
Value: £480,000



# who we've done it for



## St Regis Paper Company Ltd and DS Smith PLC Beech House Maidenhead

Full design and build including extension to existing building with new double height glass atrium, tenant fit out, furniture.

Size: 10,105 sq ft  
Program: 14 weeks  
Value: £1M

DS Smith Plc

ST REGIS



# who we've done it for

## **Bibby Factors Sussex Ltd** 3rd Floor, Lacuna Place, Hastings

Full tenant Design and fit out from Cat A Landlords finish. Works included small power and data cabling, solid and glazed partitioning, installation of break out area, mechanical alterations and floor coverings.

Size: 8,186 Sq ft

Program: 5 weeks

Value: £126,000 Sq ft



who we've done it for



## Enterprise Rent-a-Car Stansted Airport

Full design and fit out from shell  
in new arrivals hall

Program: 5 weeks  
Value: £85K



# who we've done it for



## Rushmoor Borough Council for Citizens Advice Bureau

Aldershot, Hampshire

Full design and fit out from shell in new arrivals hall

Size: 3095 sq ft

Program: 4 weeks

Value: £100K



# who we've done it for



## **Progress Software Ltd** (page 1) Arlington Square, Bracknell

Concept design, space planning,  
partitions, joinery, small power,  
lighting, mechanical, decorations  
and furniture

Program: 6 weeks  
Value: Not disclosed

**PROGRESS**  
SOFTWARE





# who we've done it for



## Progress Software Ltd (page 2) Arlington Square, Bracknell

Concept design, space planning,  
partitions, joinery, small power,  
lighting, mechanical, decorations  
and furniture

Program: 6 weeks  
Value: Not disclosed

**PROGRESS**  
SOFTWARE



who we've done it for



## Progress Software Ltd

Level 10, Tower 42, London, EC2

Partitioning, decorations, electrical.  
Data cabling, lighting, mechanical,  
joinery, floor coverings, furniture

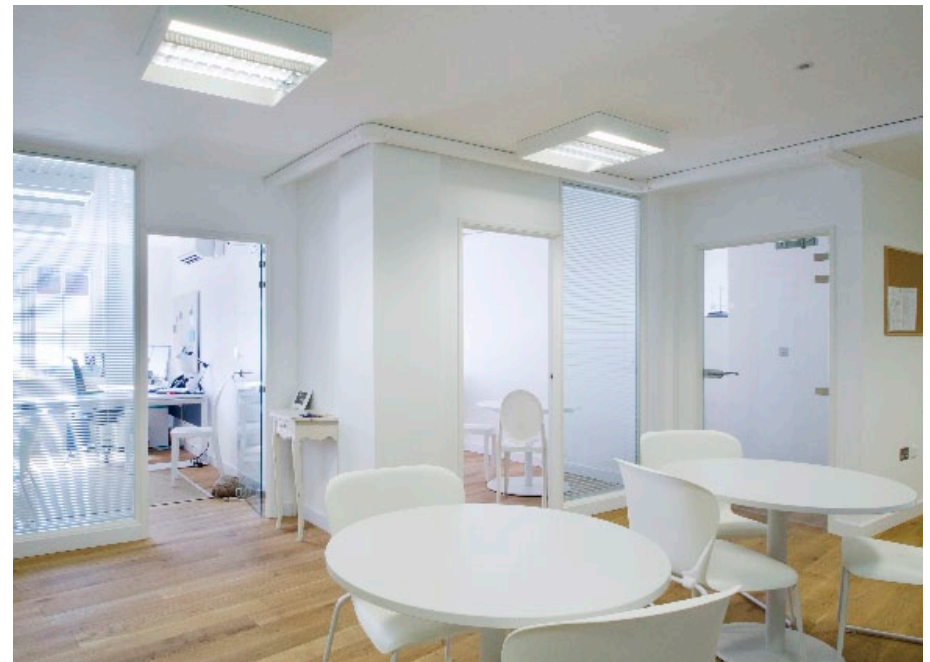
Size: 2800 Sq Ft

Program: 4 weeks

**PROGRESS**  
SOFTWARE



# who we've done it for



**Stella & Dot Ltd**  
Hammersmith, London

**stella & dot.**

**Design and fit out of new London HQ**  
**Size: 2600 sq ft**  
**Program: 4 weeks**

# who we've done it for



**SAS UK**  
Marlow



**Design, refurbishment and furniture**  
**Program: 4 weeks**  
**Budget: Undisclosed**

# who we've done it for



## **We Are Social** (page 1)

London, EC1

Space planning, design, fit out and furniture

Size: 6000 SqFt

# who we've done it for



## We Are Social (page 2)

London, EC1

Space planning, design, fit out and furniture

Size: 6000 SqFt

# blue fig interiors ltd

london office

† 020 7898 0545    f 020 7898 0546

cobham, surrey office

† 07789 818 391

[www.bluefiginteriors.com](http://www.bluefiginteriors.com)

[enquiries@bluefiginteriors.com](mailto:enquiries@bluefiginteriors.com)